

DISRUPT THE REALTY MARKET WITH
DELPHY SMART BUILDINGS



| The Internet of Things technology

The Internet of Things technology is taking the world by storm, bringing unimaginable innovation to almost every traditional industry, including the realty sector. IoT promises to optimize resource management along with many more innovative use-cases that enhance the value of your real estate projects. With DELPHY Smart buildings, we'd like to show how you can strengthen your realty business leveraging the power of IoT.

| Benefits of Smart Buildings

Attract a Diverse Group of Prospective Buyers

A recent survey by Schneider Electric has found that 78% of customers with a budget of 50 lakhs and above desire to purchase a smart home. Advantages of IoT such as enhanced home security features, ability to carefully monitor energy resources make it a valuable proposition to all categories of home buyers, ranging from aspirational millennials to risk averse middle-aged consumers.

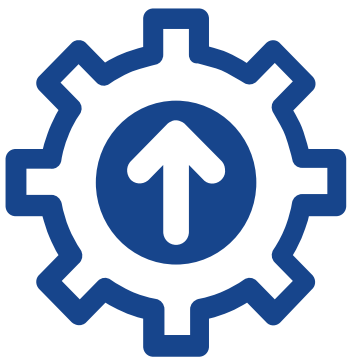


Stay Ahead of the Competition

The smart home market is growing at the rate of 30 percent year over year. Even middle income consumers in semi-urban regions are showing great interest in smart tech solutions. DELPHY's Smart Home solutions along with IoT building management leverages the real estate developer to disrupt his market and differentiate himself when competing with rivals in this cut-throat competitive market.

Get Great Value for Money

DELPHY smart home solution includes automating electrical appliances in the home, letting users control them using a mobile app, scheduling and timing appliances as well as using voice assistants like Google Assistant/Amazon Alexa. With appropriate workflows based on their usage patterns DELPHY devices users can save upto 10-20% of their electricity bills. This saving can be achieved at a price that is less than 0.5% of the total cost of home purchase which will be a potential attraction for all home owners.



Set up your Smart Building at any Stage of Development

The entire range of DELPHY products can be integrated into a building at any stage of development without making any changes to the existing infrastructure. This means that even a fully constructed apartment building can be refurbished into a smart building without incurring huge labor costs. Realtors can add significant value to their unsold inventory by adding smart home capabilities to them leading to renewed interest among prospective customers.

| Smart Building Management



Enhanced Security and Surveillance System:

- Monitor intrusion at multiple points
- Motion sensor and occupancy sensors to detect unusual activity
- Smart emergency buttons for home users to notify security personnel immediately
- Smart surveillance cameras for better security



Smart Water Management:

- Centralized control of water pumps
- Measure real time water consumption of each home using smart flow sensors
- Set schedules/routines to control water pumps



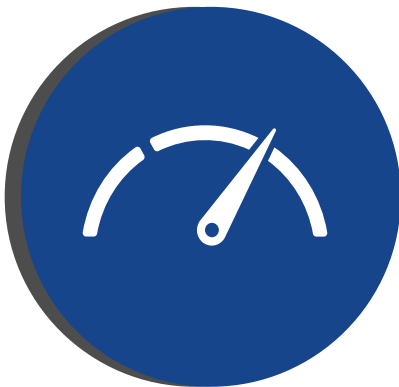
Smart Lighting System:

- Automate the lighting system with smart single phase controllers
- Centralized control of the main area lights, parking lights, corridor lights etc.
- Set workflows to turn on lights automatically using sensors
- Create schedules/routines to operate lights



Centralized Building Management Dashboard:

- Generate detailed energy consumption reports
- Carry out building security and surveillance tasks
- Manage smart water and lighting systems



Smart Energy Meters:

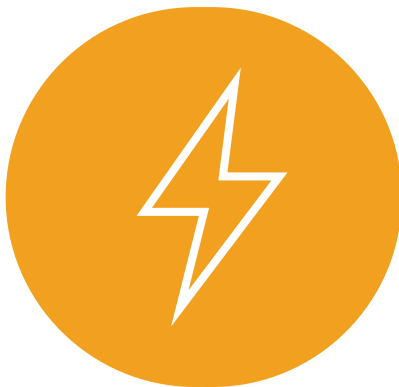
- Track real-time power consumption at different locations in the building such as parking lots, gyms, etc. with smart energy meters
- Track real-time power consumption of individual homes with smart energy meters.
- Set alerts to notify excess energy consumption above preset threshold limits.

| DELPHY Smart Home Features:



Security:

- Lock room feature sends alerts to users in case of any intrusion
- Lock/unlock home with smart lock to ensure secure access
- Monitor motion in any room using motion and occupancy sensors
- Use emergency button to alert security personnel when in need.



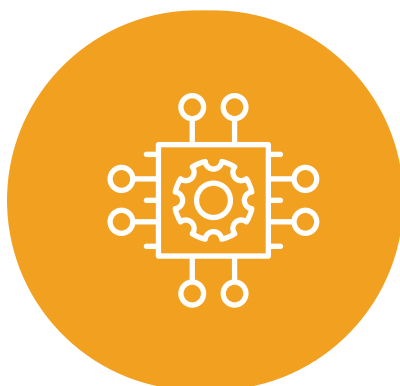
Power tracking:

- View daily/monthly power consumption in real time
- Track power consumed in individual rooms
- See weekly trends in energy usage
- Monitor power consumed by heavy duty appliances.



Convenience:

- Control home appliances with a tap on the phone
- Use voice assistants to operate appliances with voice
- Control all IR remote appliances using DELPHY mobile app
- Create custom light settings using scenes feature
- Use smart delivery box to handle packages without any hassles



Automation:

- Set schedules to operate appliances at preset times
- Create routines to control appliances on daily automatic schedules
- Set workflows that control appliances based on surrounding conditions
- Set auto-turn off timers to auto-turn off appliances after a preset time



DELPHY™
AUTOMATION
WAY TO SMART LIVING...

✉ info@delphyautomation.com 🌐 www.delphyautomation.com

☎ Toll-free : 1800-1020-668

DELPHY AUTOMATION PVT. LTD.

Head office: # 10-2-287/1/2/B, 2nd Floor, Moiz Arcade, Shanti Nagar, AC Guards,
Hyderabad - 500028 T.S (INDIA)

Other Branches: Andhra Pradesh | Maharashtra | Karnataka